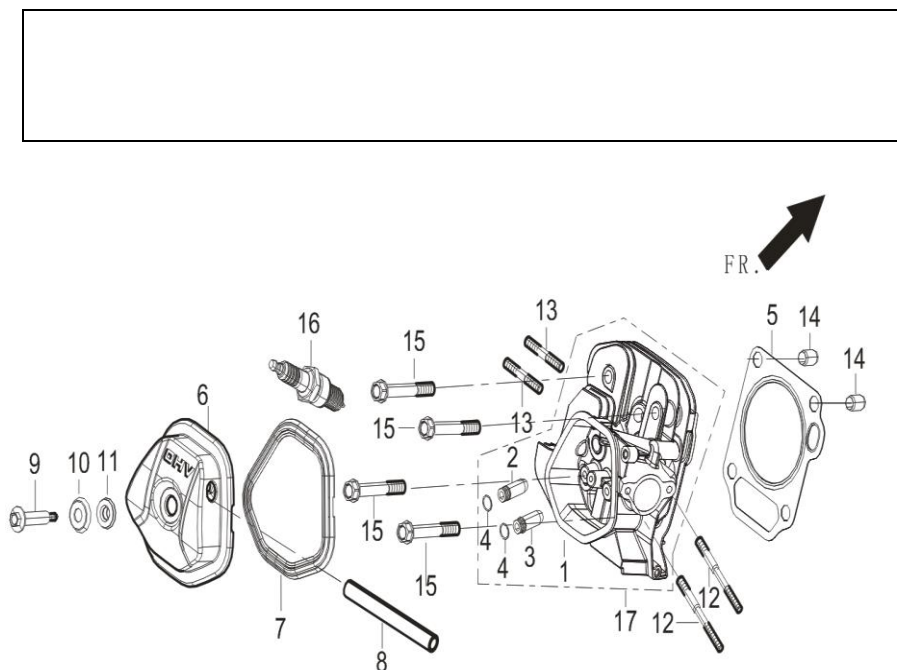


# RT100ZB26-5.2Q 图册

FIG.1 HEAD SUBASSEMBLY, CYLINDER / PLUG,SPARK (E04)

图.1 气缸头部件/火花塞(E04)



WORK HOURS 工时

5、GASKET, CYLINDER HEAD.....0.5H
5、气缸头密封垫.....0.5H
6、COVER SUBASSEMBLY, CYLINDER HEAD...0.1H
6、气缸头盖组合.....0.1H
7、GASKET, CYLINDER HEAD COVER.....0.1H
7、气缸头盖密封垫.....0.1H
16、PLUG, SPARK.....0.1H
16、火花塞.....0.1H
17、HEAD SUBASSEMBLY, CYLINDER.....0.9H
17、气缸头组合.....0.9H

REF. NO. 序号	PART NO 物料代码	CHINSES 中文名	DESCRIPTION 英文名	Q'TY 数量	包装数
E04-5	12131-Z080110-0000	气缸头密封垫	GASKET, CYLINDER HEAD	1	1
E04-6	12410-Z310110-0000	气缸头盖组合	COVER SUBASSEMBLY, CYLINDER HEAD	1	1
E04-7	12004-Z080110-0000	气缸头盖密封垫	GASKET, CYLINDER HEAD COVER	1	1
E04-8	17004-Z080210-0000	废气管	TUBE, BREATHER	1	1

E04-9	12032-Z080110-0100	缸头盖螺栓	BOLT, CYLINDER HEAD	1	1
E04-10	12031-Z080110-0100	气缸头盖螺栓垫片	GASKET, CYLINDER HEAD COVER	1	1
E04-11	12033-Z080110-0000	缸头盖螺栓密封圈	GASKET, CYLINDER HEAD COVER BOLT	1	1
E04-12	90204-Z080320-0000	双头螺栓	STUD	2	1
E04-13	90204-Z100320-0000	双头螺栓	STUD	2	1
E04-14	90502-1220-00	定位销-A 型	PIN	2	1
E04-15	12003-Z080110-0000	气缸头螺栓	BOLT, CYLINDER HEAD	4	1
E04-16	30010-Z010110-0000	火花塞	PLUG, SPARK	1	1
E04-17	12140-Z090110-0B00	气缸头组合	HEAD SUBASSEMBLY, CYLINDER	1	1

**FIG.2 CRANKCASE. (E17)**

**图.2 曲轴箱组件(E17)**

WORK HOURS 工时

1、CRANKCASE ASSY.....1.2 H

1、曲轴箱体组合.....1.2H

2、SEAL, OIL.....1.2H

2、油封.....1.2 H

3、SENSOR, ENGINE OIL.....1.0H

3、机油传感器.....1.0 H

11、ARM, GOVERNOR.....0.9 H

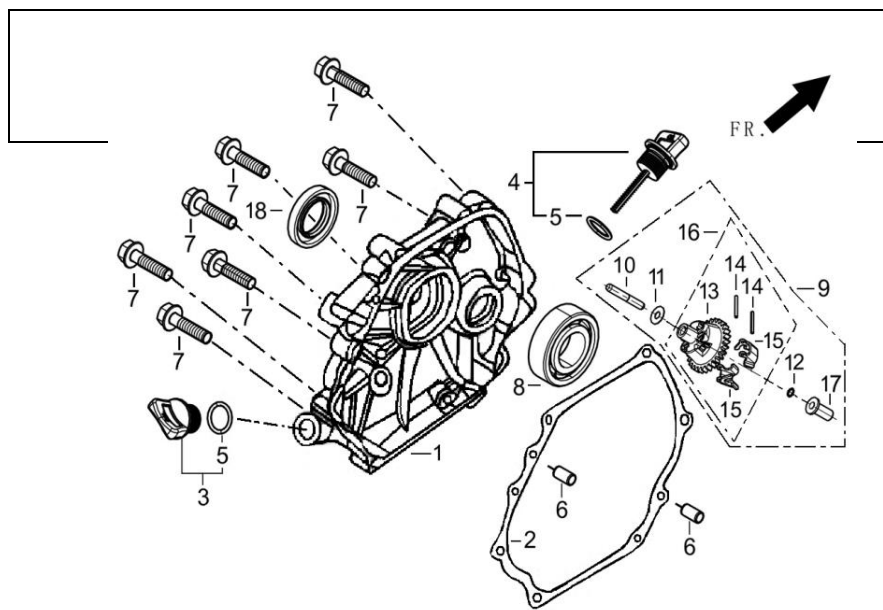
11、调速  
臂.....0.9H

REF. NO. 序号	PART NO 物料代码	CHINSES 中文名	DESCRIPTION 英文名	Q'TY 数量	包装数
E17-1	11310-Z080110-0B00	曲轴箱体组合	CRANKCASE SUBASSEMBLY.	1	1
E17-2	90682-Z080110-0000	油封	SEAL, OIL	1	1
E17-3	37060-Z080120-0000	机油传感器	SENSOR, ENGINE OIL	1	1
E17-4	16612-Z080120-H300	油箱安装架	FRAME, FUEL TANK INSTALLTION	1	1
E17-5	28101-Z080110-0000	橡胶塞	PLUG, RUBBER	1	1
E17-6	37050-Z010210-0000	机油保护器	PROTECTOR, OIL	1	1
E17-7	90001-0612-01	六角法兰面螺栓	BOLT	1	1
E17-8	90412-Z080110-0000	平垫圈	WASHER	2	1
E17-9	11007-Z080110-0000	放油螺栓	BOLT, DRAIN PLUG	2	1
E17-10	90684-Z030120-0000	线夹	CLIP	1	1
E17-11	16061-Z080110-0000	调速臂	ARM, GOVERNOR	1	1

E17-12	90412-Z080210-0000	平垫圈	RING, SEAL	1	1
E17-13	90501-Z010110-0000	开口销	PIN	1	1
E17-14	90001-0820-01	六角法兰面螺栓	BOLT	2	1
E17-15	90001-0816-01	六角法兰面螺栓	BOLT	2	1
E17-16	90305-Z010210-01	六角法兰面螺母	NUT	1	1
E17-17	90001-0616-01	六角法兰面螺栓	BOLT	2	1

FIG.3 COVER SUBASSEMBLY, CRANKCASE / GEAR ASSY, GOVERNOR (E01)

图.3 曲轴箱盖部件/调速齿轮部件(E01)



WORK HOURS 工时

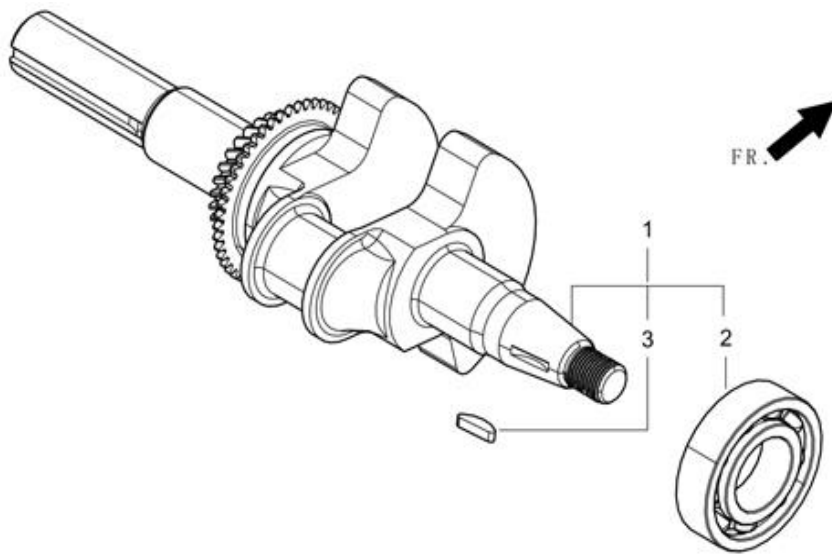
1、COVER, CRANKCASE.....	0.2H
1、曲轴箱 盖.....	0.2H
2、GASKET, CRANKCASE.....	0.2H
2、曲轴箱密封 垫.....	0.2H
8、BEARING, CRANKSHAFT :	
REAR.....	0.4H
8、轴 承.....	0.4H
18、OIL SEAL, CRANKSHAFT :	
REAR.....	0.3H
18、油 封.....	0.3H

REF. NO. 序号	PART NO 物料代码	CHINSES 中文名	DESCRIPTION 英文名	Q'TY 数量	包装数
----------------	-----------------	----------------	--------------------	------------	-----

E01-1	11411-Z080110-0B00	曲轴箱盖	COVER, CRANKCASE	1	1
E01-2	11001-Z080120-0000	曲轴箱密封垫	GASKET, CRANKCASE	1	1
E01-3	15030-Z080130-Q500	机油塞组合	PLUG SUBASSEMBLY, ENGINE OIL	1	1
E01-4	15010-Z080130-Q500	机油尺组合	DIPSTICK SUBASSEMBLY, OIL	1	1
E01-6	90502-0812-00	定位销-A 型	PIN	2	1
E01-7	90001-0835-01	六角法兰面螺栓-小系列	BOLT	7	1
E01-8	90548-0206-CL	深沟球轴承	BEARING	1	1
E01-9	16400-Z080110-0000	调速齿轮部件	GEAR ASSY, GOVERNOR	1	1
E01-18	90682-Z080110-0000	油封	SEAL, OIL	1	1

FIG.4 ROD,CRANKSHAFT CONNETING (E03)

图.4 曲柄组件(E03)



WORK HOURS 工时

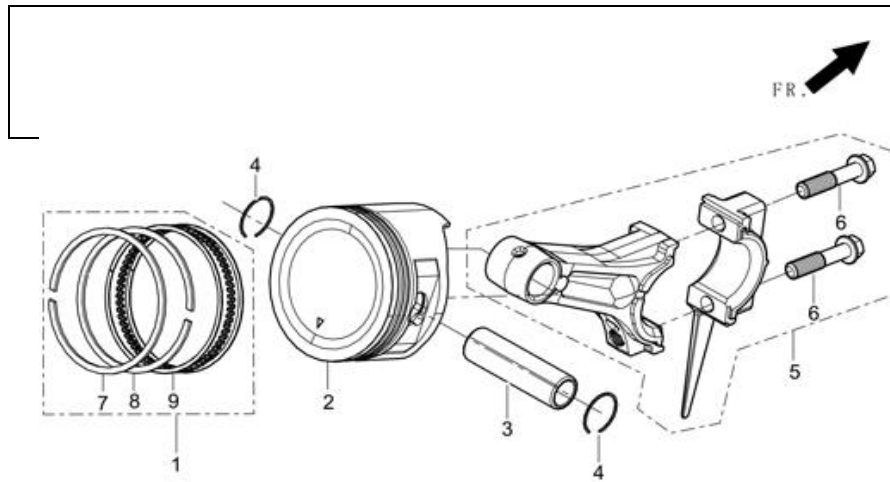
—	1、CRANKSHAFT ASSY.....	1.1H
—	1、曲轴部件.....	1.1H

REF. NO. 序号	PART NO 物料代码	CHINSES 中文名	DESCRIPTION 英文名	Q'TY 数量	包装数
-------------	--------------	-------------	-----------------	---------	-----

E03- 13300- 曲轴部件 CRANKSHAFT ASSY. 1 1  
 1 Z080210-0000

**FIG.5 RING SET,OIL / ROD,CRANKSHAFT CONNETING (E03)**

**图.5 油环组合/曲柄连杆组件 (E03)**



WORK HOURS 工时

1-5、PISTON RINGS SET  
 AND/OR CLIP, PISTON PIN  
 AND/ OR PISTON ASSY.  
 AND/OR PIN, PISTON  
 AND/OR ROD,  
 CONNECTING.....  
 .....1.1H

1-5、活塞/一环/二环/活塞  
 销/连杆.....1.1H

INCLUDES :

Inspection/Measurement/Ci  
 eaning

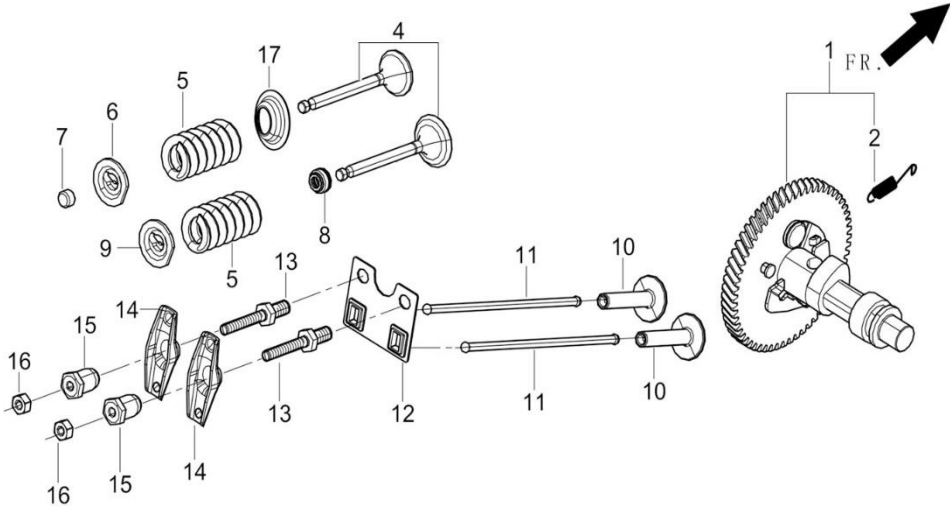
含：检查/测量/清洗

REF. NO. 序号	PART NO 物料代码	CHINSES 中文名	DESCRIPTION 英文名	Q'TY 数量	包装数
E03-1	13200-Z080210-0000	活塞环部件	PISTON RINGS SET	1	1
E03-2	13111-Z080210-0000	活塞	PISTON	1	1
E03-3	13121-Z080110-0000	活塞销	PIN, PISTON	1	1
E03-4	13122-Z010110-0000	活塞销卡圈	CLIP, PISTON PIN	2	1
E03-5	13010-Z080120-0000	连杆	ROD, CONNECTING	1	1

**FIG.6 TRAIN,VALVE / CAMSHAFT SUBASSEMBLY (E05)**

**图.6 配气机构组件/凸轮轴 (E05)**

WORK HOURS 工时



1、CAMSHAFT  
 ASSY.....0.4H  
 INCLUDES:Valve clearance  
 adjustment  
 4、 VALVES  
 SET.....1  
 H  
 INCLUDES:Valve clearane  
 adjustment and reface  
 replace intake and exhaust  
 all 0.1  
 7、  
 ROTATOR,VALVE.....0.2H  
 INCLUDES:Valve clearance  
 adjustment 10、 TAPPET,  
 VALVE.....0.  
 7H  
 INCLUDES:Valve clearance  
 adjustment  
 11、 LIFTER,  
 VALVE.....0.4H  
 INCLUDES:Valve clearance  
 adjustment  
 NOTE:Same time for two  
 unit

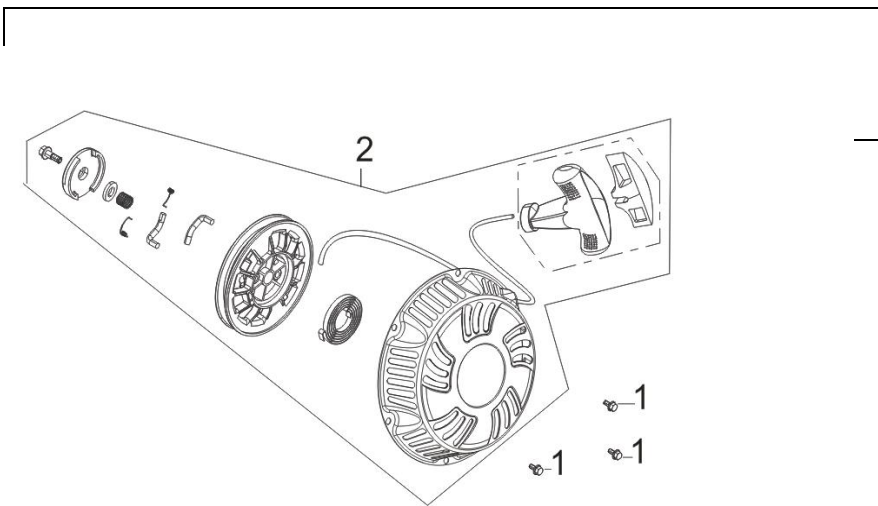
REF. NO. 序号	PART NO 物料代码	CHINSES 中文名	DESCRIPTION 英文名	Q'TY 数量	包装数
E05-1	14200-Z080110-0000	凸轮轴部件	CAMSHAFT ASSY.	1	1
E05-4	12110-Z080110-0000	气门组件	VALVE	1	1
E05-5	12103-Z080110-0000	气门弹簧	SPRING, VALVE	2	1
E05-6	12107-Z080110-0000	排气门弹簧座	RETAINER, EXHAUST VALVE	1	1
E05-7	12104-Z080110-0000	气门调整帽	RATATOR, VALVE	1	1
E05-8	12101-Z080110-0000	挡油罩	GUIDE, SEAL	1	1
E05-9	12112-Z080110-0000	气门弹簧座	RETAINER, VALVE SPRING	1	1

E05-10	14081-Z080110-0000	气门挺柱	LIFTER, VALVE	2	1
E05-11	14070-Z080110-0000	气门挺杆组合	TAPPET, VALVE	2	1
E05-12	14090-Z080110-0000	挺杆限位板组合	PLATE SUBASSEMBLY, LIFTER STOPPER	1	1
E05-13	14313-Z010110-0000	摇臂轴螺栓	BOLT, VALVE ADJUSTING	2	1
E05-14	14311-Z080110-0000	气门摇臂	ROCKER, VALVE	2	1
E05-15	14314-Z010110-0000	气门调节螺母	NUT, VALVE ADJUSTING	2	1
E05-16	14312-Z010110-0000	气门锁紧螺母	NUT, VALVE LOCK	2	1
E05-17	12105-Z080110-0000	气门弹簧座圈	RETAINER, VALVE SPRING	1	1

**FIG.7 STARTER,RECOIL (E08)**

**图.7 手起动组件 (E08)**

WORK HOURS 工时



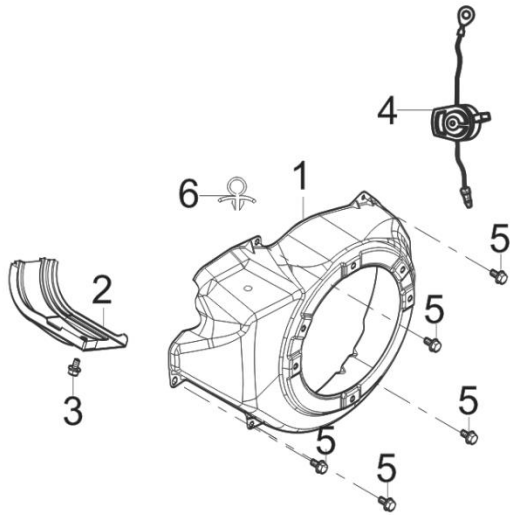
2、STARTER ASSY,  
RECOIL.....0.  
1H  
— 2、手起动部  
件.....0.1  
H

REF. NO. 序号	PART NO 物料代码	CHINSES 中文名	DESCRIPTION 英文名	Q'TY 数量	包装数
E08-1	90001-0608-01	六角法兰面螺栓	BOLT	3	1

E08- 2	28200- Z081110- H700	手起动部件	STARTER ASSY, RECOIL	1	1
-----------	----------------------------	-------	----------------------	---	---

FIG.8 SHROUD / SHIELD,LOWER 缸体导风罩/下护罩 (E14)

图.8 缸体导风罩/下护罩 (E14)



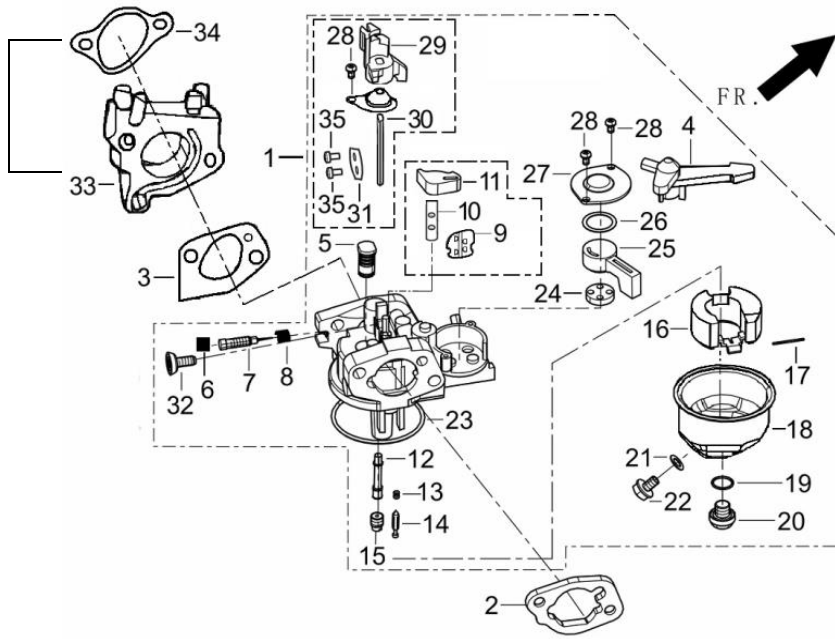
WORK HOURS 工时

1、	SHROUD.....0.2H
1、导风罩.....0.2H	
2、SHROUD, CYLINDER BODY.....0.2H	
2、缸体导风罩.....0.2H	
4、SWITCH SUBASSEMBLY, STOP ENGINE.....0.2H	
4、熄火开关组合.....0.2H	

REF. NO. 序号	PART NO 物料代码	CHINSES 中文名	DESCRIPTION 英文名	Q'TY 数量	包装数
E14-1	28110- Z080510- H700	导风罩	SHROUD	1	1
E14-2	19304- Z090110-0000	缸体导风罩	SHROUD, CYLINDER BODY	1	1
E14-3	90001-0612- 01	六角法兰面螺栓-小系列	BOLT	1	1
E14-4	35540- Z060140- QG00	熄火开关组合	SWITCH SUBASSEMBLY, STOP ENGINE	1	1
E14-5	90001-0612- 01	六角法兰面螺栓-小系列	BOLT	5	1
E14-6	90684- Z080110-0000	线夹	CLIP	1	1

FIG.9 CARBURETOR ASSY. 化油器部件 (E11)

图.9 化油器部件 (E11)



WORK HOURS 工时

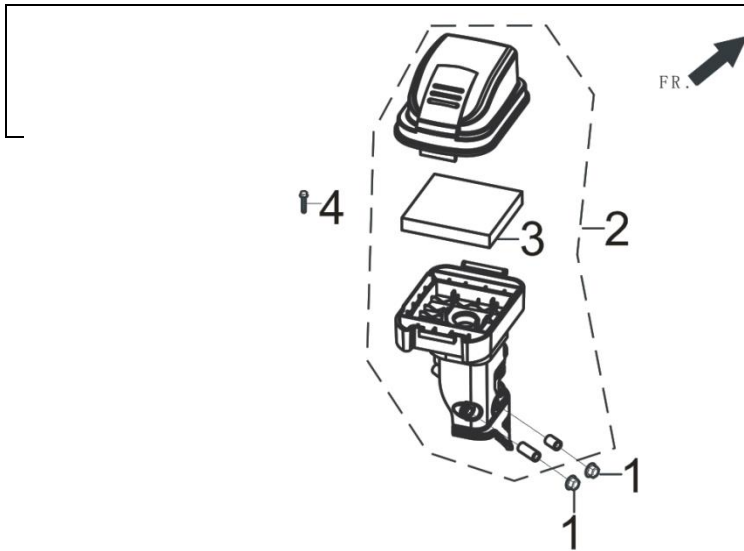
- 1、CARBURETOR ASSY.....0.2H
- 1、化油器部件.....0.2H
- 3/34、GASKET, CARBURETOR AND/OR GASKET, INLET.....0.2H
- 3/34、化油器密封垫/进气口密封垫.....0.2H
- 33、PLATE, CARBURETOR INSULATOR.....0.2H
- 33、化油器隔热板.....0.2H

REF. NO. 序号	PART NO 物料代码	CHINSE 中文名	DESCRIPTION 英文名	Q'TY 数量	包装数
E11-1	16100-Z080210-0000	化油器部件	CARBURETOR ASSY.	1	1
E11-2	17001-Z080210-0000	空滤器密封垫	GASKET, AIR CLEANER	1	1
E11-3	16001-Z080110-0000	化油器密封垫	GASKET, CARBURETOR	1	1
E11-33	16003-Z080110-0000	化油器隔热板	PLATE, CARBURETOR INSULATOR	1	1
E11-34	17002-Z080210-0000	进气口密封垫	GASKET, INLET	1	1

FIG.10 CLEANER, AIR 空滤器 (F02)

图.10 空滤器(F02)

WORK HOURS 工时

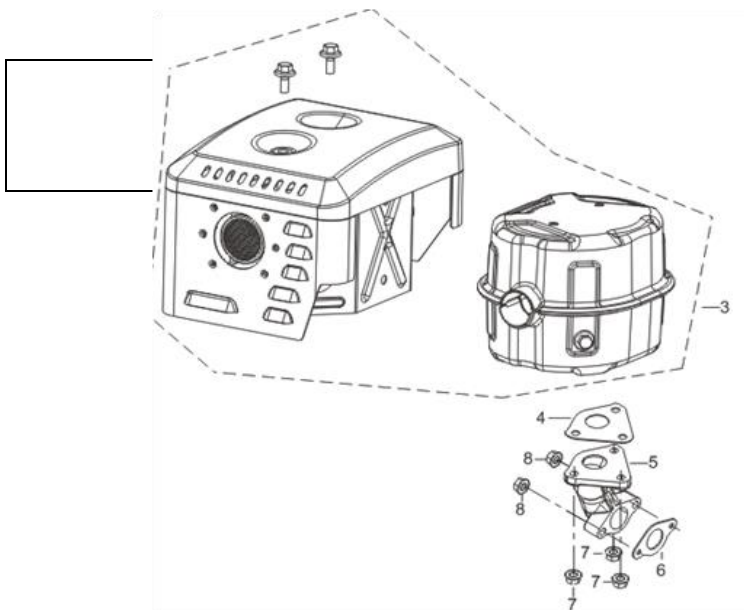


2、CLEANER,  
AIR.....0.  
1H  
- 2、空滤  
器.....0.1H

REF. NO. 序号	PART NO 物料代码	CHINSES 中文名	DESCRIPTION 英文名	Q'TY 数量	包装数
F02-1	90305-0600-31	六角法兰面螺母	NUT	2	1
F02-2	17100-Z580120-0000	空滤器	CLEANER, AIR	1	1
F02-3	17151-Z580110-0000	空滤器滤芯	ELEMENT SUBASSEMBLY, AIR CLEANER	1	1
F02-4	90007-0630-A1	六角法兰面螺栓	BOLT	1	1

FIG.11 MUFFLER ASSY. 消声器部件 (F04)

图.11 消声器部件(F04)



WORK HOURS 工时

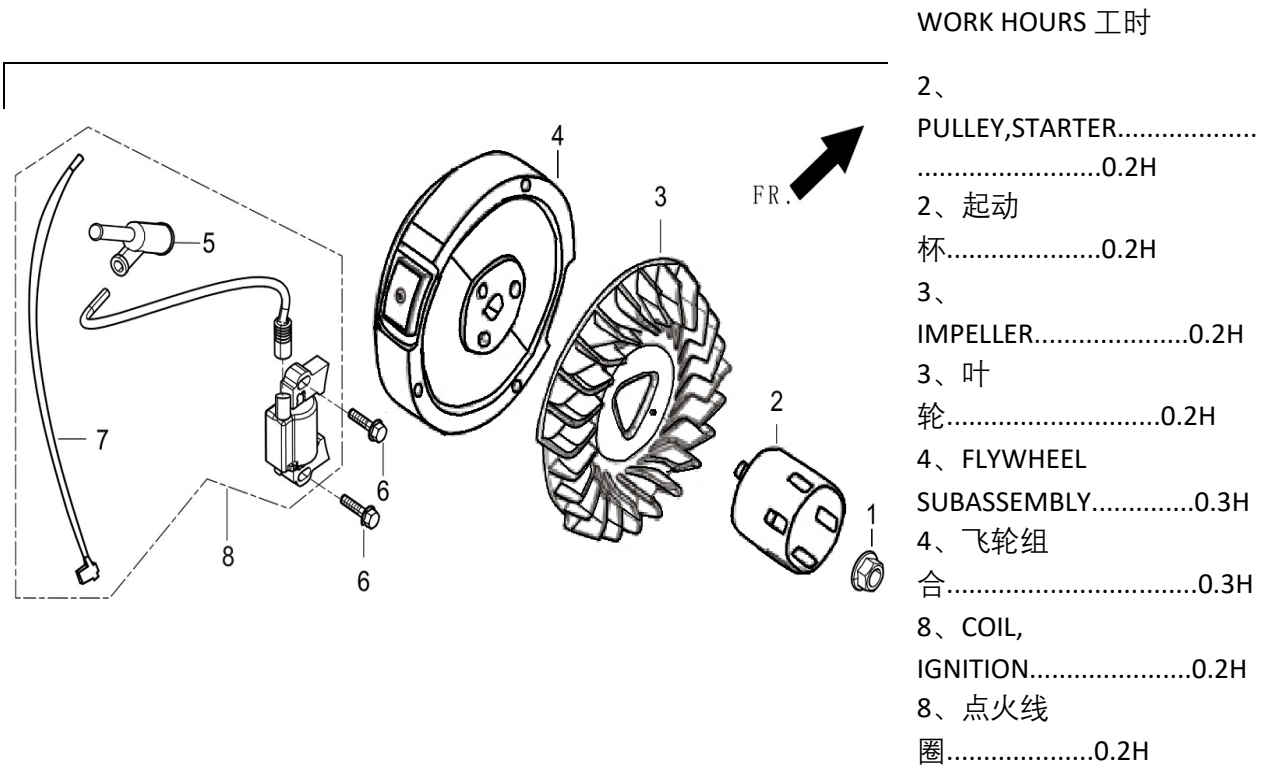
3、MUFFLER  
ASSY.....0.  
2H  
3、消声器部  
件.....0.2  
H  
6、GASKET, EXHAUST  
OUTLET.....0.1H  
6、排气口密封  
垫.....  
.....0.1H



F01-3	16730-Z300120-0000	油箱盖	COVER, FUEL TANK	1	1
F01-4	16680-Z010110-0000	出油嘴组合	OUTLET SUBASSEMBLY, FUEL TANK OIL	1	1
F01-5	90740-Z010210-0000	卡箍	COLLAR	2	1
F01-6	90686-Z080310-0000	油管	TUBE, FUEL	1	1
F01-7	90305-0800-31	六角法兰面螺母	NUT	2	1

FIG.13 FLYWHEEL / IMPELLER / STARTER PULLEY / IGNITION COIL (E15)

图.13 飞轮/叶轮/启动杯/点火线圈 (E15)

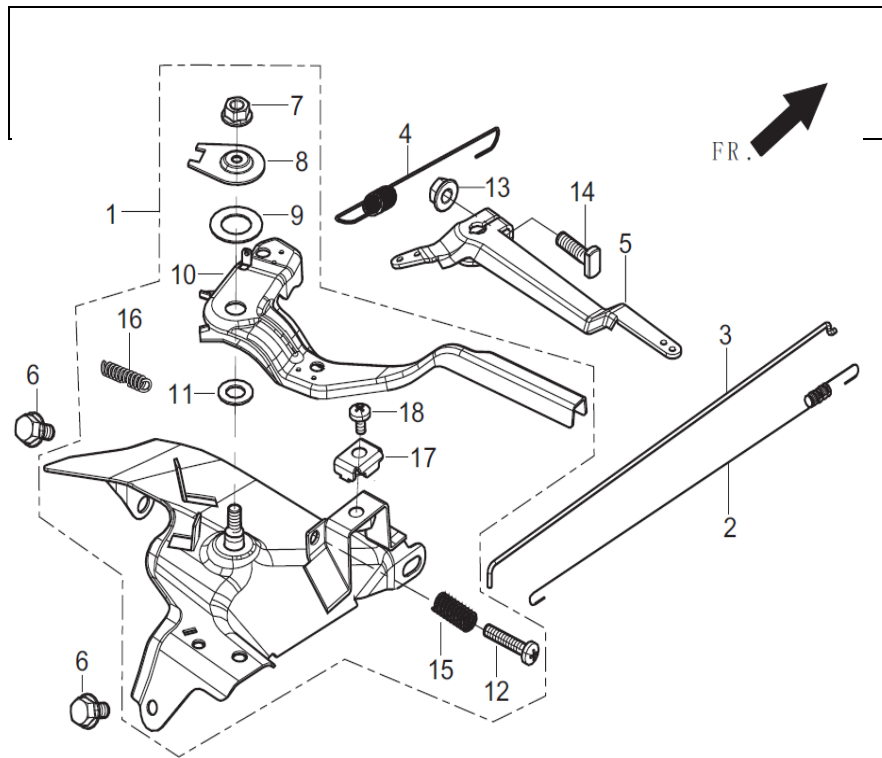


REF. NO. 序号	PART NO 物料代码	CHINSES 中文名	DESCRIPTION 英文名	Q'TY 数量	包装数
E15-1	13501-Z080110-0000	飞轮螺母	NUT, FLYWHEEL	1	1
E15-2	28002-Z080310-0000	启动杯	PULLEY,STARTER	1	1
E15-3	19352-Z080110-0000	叶轮	IMPELLER	1	1

E15-4	13510-Z080110-0000	飞轮组合	FLYWHEEL SUBASSEMBLY	1	1
E15-6	90001-0628-01	六角法兰面螺栓-小系列	BOLT	2	1
E15-8	30400-Z080310-0100	点火线圈	COIL, IGNITION	1	1

FIG.14 CONTROL ASSY, THROTTLE (E13)

图.14 油门操纵部件 (E13)



WORK HOURS 工时

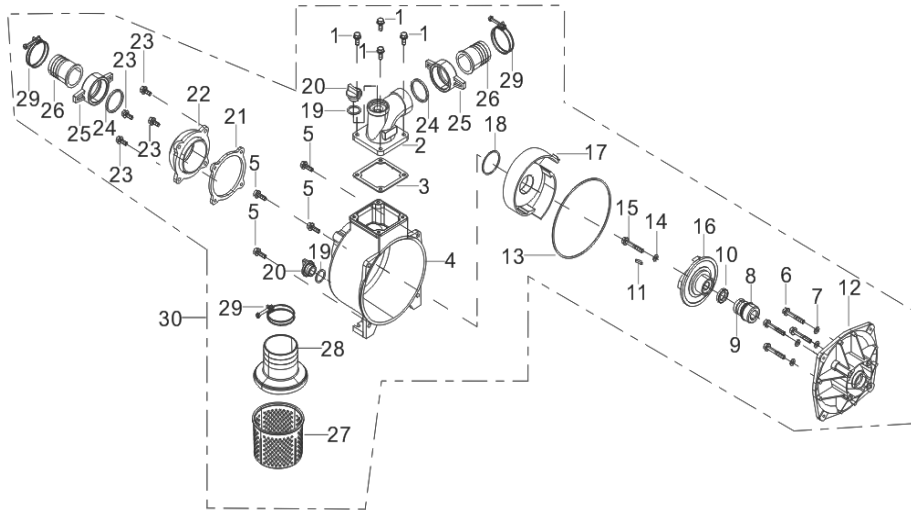
1、CONTROL ASSY, THROTTLE.....	0.2H
1、油门操纵部件.....	0.2H
2、SPRING, THROTTLE VALVE RETURNING.....	0.3H
2、节气门复位弹簧.....	0.3H
3、ROD, GOVERNOR.....	0.3H
3、调速拉杆.....	0.3H
4、SPRING, GOVERNOR.....	0.2H
4、调速弹簧.....	0.2H
5、SUPPORT SUBASSEMBLY, GOVERNOR.....	0.2H
5、调速支架组合.....	0.2H

REF. NO. 序号	PART NO 物料代码	CHINSES 中文名	DESCRIPTION 英文名	Q'TY 数量	包装数
E13-1	16520-Z080320-0000	油门操纵组合	CONTROL ASSY, THROTTLE	1	1
E13-2	16012-Z080110-0000	节气门复位弹簧	SPRING, THROTTLE VALVE RETURNING	1	1

E13-3	16062-Z080110-0000	调速拉杆	ROD, GOVERNEOR	1	1
E13-4	16063-Z080120-0000	调速弹簧	SPRING, GOVERNOR	1	1
E13-5	16070-Z080110-0000	调速支架组合	SUPPORT SUBASSEMBLY, GOVERNOR	1	1
E13-6	90001-0612-01	六角法兰面螺栓-小系列	BOLT	2	1
E13-13	90305-0600-31	六角法兰面螺母	NUT	1	1
E13-14	16072-Z010110-0000	调速支架固定螺栓	BOLT, GOVERNOR SUPPORT	1	1

FIG.15 PUMP ASSY, WATER (F68)

图.15 水泵部件 (F68)



WORK HOURS 工时

2、OUTLET, WATER.....	0.1H
4、PUMP BODY.....	0.2H
4、泵体.....	0.2H
8、SEAL ASSY, MECHANISM.....	0.5H
8、机械密封部件.....	0.5H
12、JOINT, WATER PUMP.....	0.6H
12、水泵连接盘.....	0.6H
16、IMPELLER, WATER PUMP.....	0.2H
16、水泵叶轮.....	0.2H
17、CASE, WHORL.....	0.2H
17、涡壳.....	0.2H
18、RIGN, WHORL CASE SEALING.....	0.2H
18、涡壳密封圈.....	0.2H

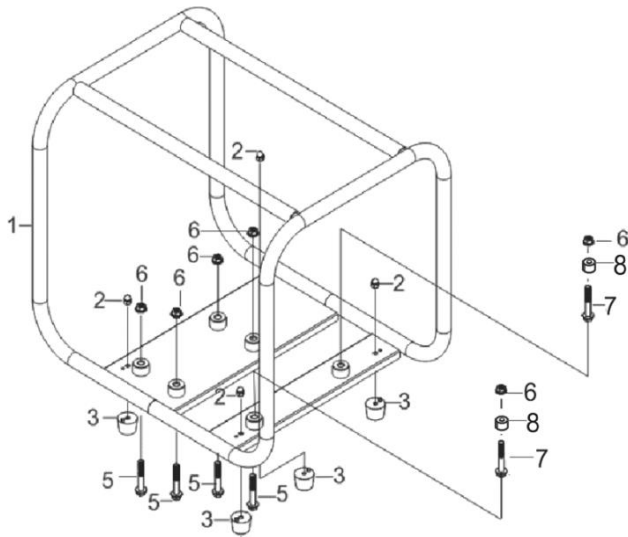
REF. NO. 序号	PART NO 物料代码	CHINSES 中文名	DESCRIPTION 英文名	Q'TY 数量	包装数
F68-1	90001-1030-01	六角头螺栓-全螺纹	BOLT	4	1
F68-2	70108-V030510-0000	出水口	OUTLET, WATER	1	1
F68-3	70109-V030210-0000	出水口密封垫	GASKET, INLET WATER	1	1
F68-4	70105-V030510-0000	泵体	PUMP BODY	1	1
F68-5	90001-1030-01	六角头螺栓-全螺纹	BOLT	4	1
F68-6	90007-V030210-0000	六角法兰面螺栓-加大系列-B级	BOLT	4	1
F68-7	90409-V010210-0000	密封垫圈	WASHER	4	1
F68-8	70300-V030210-0000	机械密封部件	SEAL ASSY, MECHANISM	1	1
F68-9	70309-V030210-0000	陶瓷密封	SEAL,PORCELAIN	1	1
F68-10	70125-V030210-0000	叶轮密封圈	RING, IMPELLER SEAL	1	1
F68-11	90522-V030210-0000	普通平键	washer	1	1
F68-12	70118-V030610-0000	水泵连接盘	JOINT, WATER PUMP	1	1
F68-13	70119-V030210-0000	水泵连接盘垫	CUSHION, WATER PUMP JOINT	1	1

F68-14	90409-V030110-0000	密封垫圈	WASHER	1	1
F68-15	90102-V030310-0000	六角法兰面螺栓	BOLT	1	1
F68-16	70102-V030510-0000	水泵叶轮	IMPELLER, WATER PUMP	1	1
F68-17	70103-V030310-0000	涡壳	CASE, WHORL	1	1
F68-18	70104-V030210-0000	涡壳密封圈	RIGN, WHORL CASE SEALING	1	1
F68-19	70122-V010210-0000	螺塞垫圈	WASHER, SCREW PLUG	2	1
F68-20	70107-V010210-0000	螺塞	PLUG, THREAD	2	1
F68-21	70115-V030210-0000	进水口密封垫	GASKET, INLET WATER	1	1
F68-22	70116-V030510-0000	进水口	INLET, WATER	1	1
F68-23	90001-1030-01	六角头螺栓-全螺纹	BOLT	4	1
F68-24	70131-V030210-0000	软管接头密封圈	RING, HOSE JOINT SEAL	2	1
F68-25	70111-V030510-0000	软管接头	JOINT, HOSE	2	1
F68-26	70112-V030310-0000	软管接口	INTERFACE, HOSE	2	1
F68-27	70114-V030210-0000	滤网	FILTER	1	1

F68-28	70113-V030310-0000	滤网盖	COVER, FILTER	1	1
F68-29	70400-V030310-0000	软管箍部件	HOOP ASSY, HOSE	3	1
F68-30	70100-V031510-0K00	水泵部件	PUMP ASSY, WATER	1	1

**FIG.16 FRAME ASSY, ENGINE/WHEEL ASSY, FRONT/SUB-ASSEMBLY, COMP, HANDLE TUBE (F61)**

**图.16 机架部件/前轮部件/手把管 (F61)**



WORK HOURS 工时

1、FRAME ASSY, ENGINE.....	0.5H
1、机架部 件.....	0.5H
3、SEAT, ENGINE FRAME SHOCK ABSORPTION.....	0.1H
3、机架减震 座.....	0.1H

REF. NO.	PART NO 物料代码	CHINSES 中文名	DESCRIPTION 英文名	Q'TY 数量	包装数
F61-1	51100-V031110-H7L0	机架部件	FRAME ASSY, ENGINE	1	1
F61-2	90001-0610-01	六角法兰面螺栓	BOLT	4	1
F61-3	51014HY450110-0000	机架减震座	SEAT, ENGINE FRAME SHOCK ABSORPTION	4	1
F61-5	90002-1035-01	六角法兰面螺栓	BOLT	4	1
F61-6	90305-Z010210-01	六角法兰面螺母	NUT	6	1

F61-7	90002-1035-01	六角法兰面螺栓-小系列	BOLT	2	1
F61-8	51146-V030110-0000	水泵安装支座	SEAT, WATER PUMP	2	1