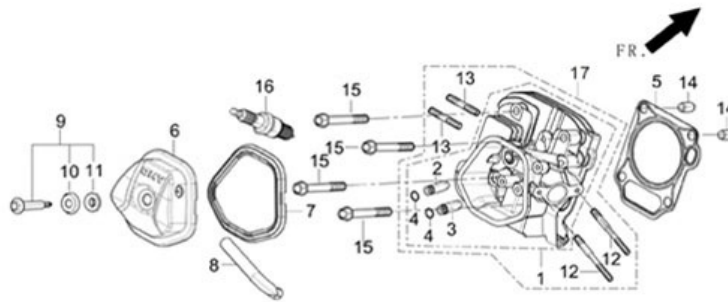


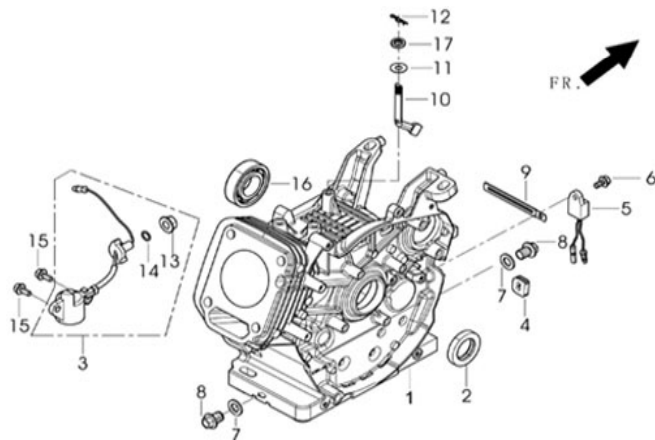
# POWERSMART G5500

**FIG.1 CYLINDER HEAD, CYLINDER COVER ASSY (E04)**



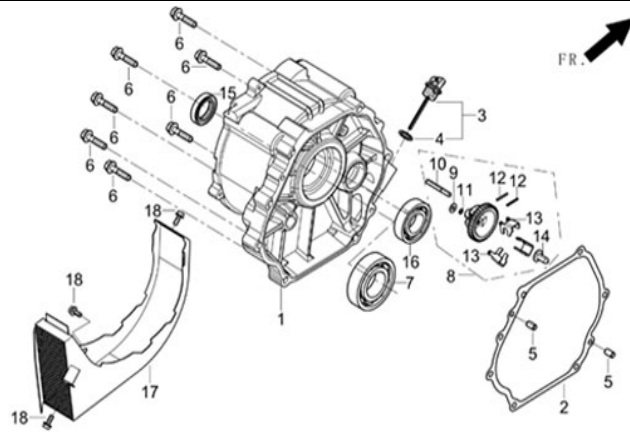
REF.NO.	PART NO	DESCRIPTION	Q'TY	UNIT PRICE
E04-1	12140-Z100110-0000	HEAD SUBASSEMBLY, CYLINDER	1	
E04-5	12131-Z100110-0000	GASKET, CYLINDER HEAD	1	
E04-6	12410-Z080110-H300	COVER SUBASSEMBLY, CYLINDER HEAD(BLAC	1	
E04-7	12004-Z580110-0000	GASKET, CYLINDER HEAD COVER	1	
E04-8	17004-Z080110-0000	TUBE, BREATHER	1	
E04-9	12030-Z080110-0000	BOLT SUBASSEMBLY, CYLINDER HEAD	1	
E04-12	90204-Z100110-0000	STUD	2	
E04-13	90203-Z010110-0000	STUD	2	
E04-14	90502-1220-00	PIN	2	
E04-15	12003-Z080110-0000	BOLT, CYLINDER HEAD	4	
E04-16	30010-Z010210-0000	PLUG, SPARK	1	

**FIG.2 CRANKCASE (E17)**



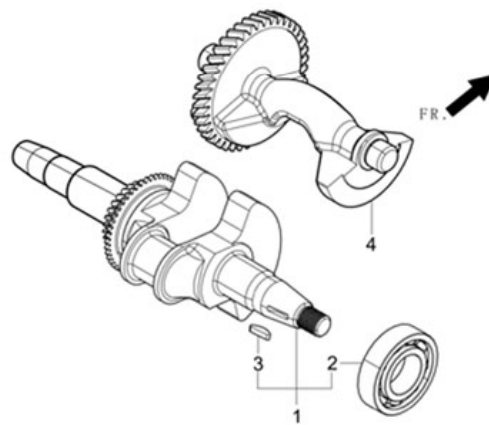
REF.NO.	PART NO	DESCRIPTION	Q'TY	UNIT PRICE
E17-1	11310-Z100110-0000	CRANKCASE SUBASSEMBLY.	1	
E17-2	90682-Z100110-0000	SEAL, OIL	1	
E17-3	37060-Z080110-0000	SENSOR, ENGINE OIL	1	
E17-4	28101-Z080110-0000	PLUG, RUBBER	1	
E17-5	37050-Z010210-0000	PROTECTOR, OIL	1	
E17-6	90001-0612-01	BOLT	1	
E17-7	90412-Z080110-0000	WASHER	2	
E17-8	11007-Z080110-0000	BOLT, DRAIN PLUG	2	
E17-9	90684-Z030120-0000	CLIP	1	
E17-10	16061-Z100110-0000	ARM, GOVERNOR	1	
E17-11	90412-Z080210-0000	WASHER	1	
E17-12	90501-Z010110-0000	PIN	1	
E17-15	90001-0616-01	BOLT	2	
E17-16	90547-0207-00	BEARING	1	
E17-17	90682-Z310110-0000	SEAL, OIL	1	

**FIG.3 COVER, CRANKCASE (E01)**



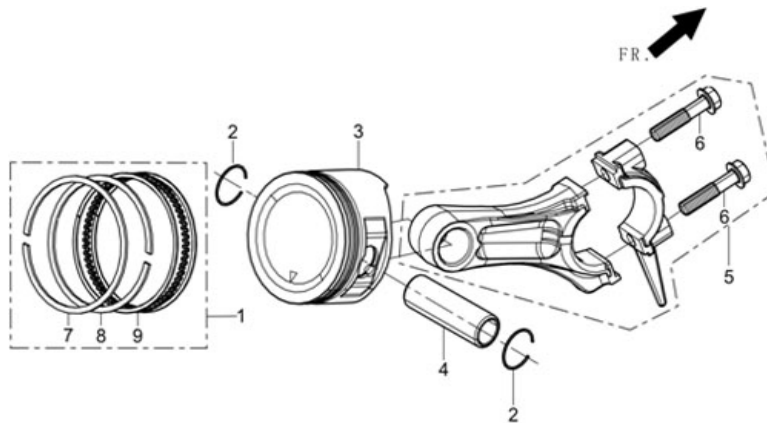
REF.NO.	PART NO	DESCRIPTION	Q'TY	UNIT PRICE
E01-1	11411-Z100610-0000	COVER, CRANKCASE	1	
E01-2	11001-Z100210-0000	GASKET, CRANKCASE	1	
E01-3	15010-Z080320-Q500	CAP COMP., OIL FILLER(YELLOW)	1	
E01-5	90502-0812-00	PIN	2	
E01-6	90547-0207-00	BOLT	7	
E01-7	90547-0207-00	BEARING	1	
E01-8	16400-Z100110-0000	GEAR ASSY, GOVERNOR	1	
E01-15	90682-Z100110-0000	OIL SEAL	1	
E01-16	90548-0202-00	BEARING	1	
E01-17	30024-Y030110-0000	SHROUD,MOTOR	1	
E01-18	90001-0512-01	BOLT	3	

**FIG.4 CRANKSHAFT ASSY.(E03)**



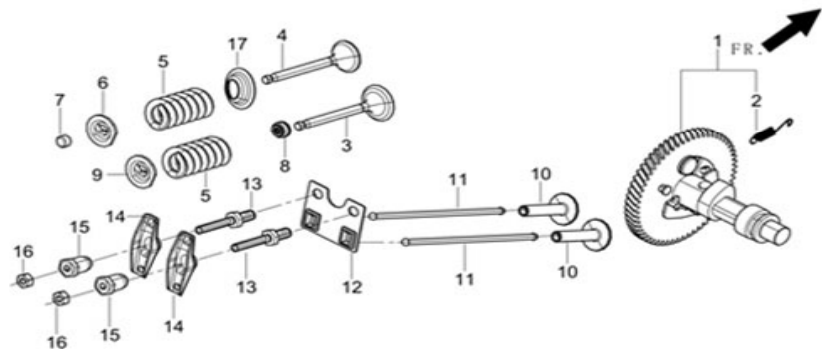
REF.NO.	PART NO	DESCRIPTION	Q'TY	UNIT PRICE
E03-1	13300-Z100110-0000	CRANKSHAFT ASSY.	1	
E03-4	13401-Z100110-0000	WEIGHT, BALANCER	1	

**FIG.5 PISTON/CONNECTING ROD (E03)**



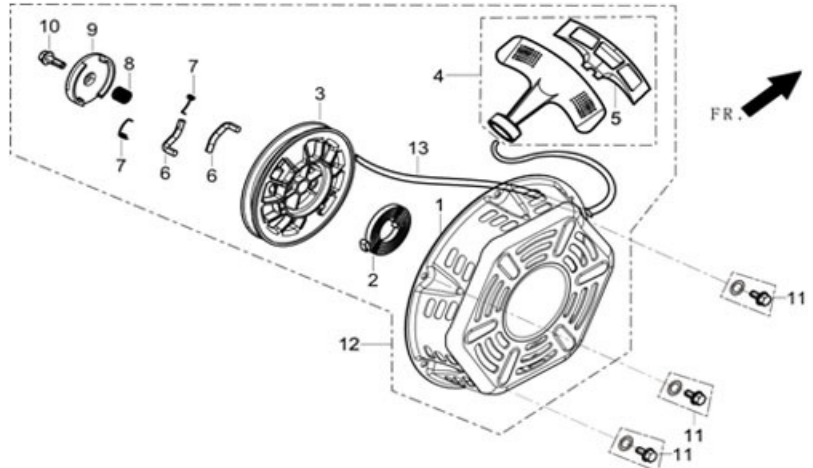
REF.NO.	PART NO	DESCRIPTION	Q'TY	UNIT PRICE
E03-2	13122-Z100110-0000	CLIP, PISTON PIN	2	
E03-3	13111-Z310110-0000	PISTON	1	
E03-4	13121-Z100110-0000	PIN, PISTON	1	
E03-5	13010-Z100110-0000	ROD, CONNECTING	1	
E03-7	13201-Z100110-0000	RING, THE FIRST	1	
E03-8	13202-Z100110-0000	RING, THE SECON	1	
E03-9	13210-Z100110-0000	RING SET, OIL	1	
	29012	PISTON RING SET	1	

**FIG.6 CAMSHAFT ASSY. (E05)**



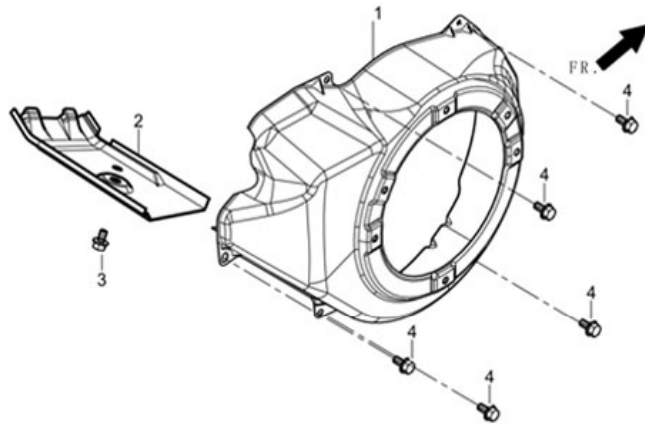
REF.NO.	PART NO	DESCRIPTION	Q'TY	UNIT PRICE
E05-1	14200-Z100110-0000	CAMSHAFT ASSY.	1	
E05-3	12111-Z100110-0099	VALVE, INTAKE	1	
E05-4	12121-Z190110-0099	VALVE, EXHAUST	1	
E05-5	12103-Z080110-0000	SPRING, VALVE	2	
E05-6	12107-Z080110-0000	RETAINER, EXHAUST VALVE	1	
E05-7	12104-Z080110-0000	RATATOR, VALVE	1	
E05-8	12101-Z080110-0000	GUIDE, SEAL	1	
E05-9	12112-Z080110-0000	RETAINER, VALVE SPRING	1	
E05-10	14081-Z080110-0000	LIFTER, VALVE	2	
E05-11	14070-Z100110-0000	TAPPET, VALVE	2	
E05-12	14090-Z080110-0000	PLATE SUBASSEMBLY, LIFTER STOPPER	1	
E05-13	14313-Z010110-0000	BOLT, VALVE ADJUSTING	2	
E05-14	14311-Z080110-0000	ROCKER, VALVE	2	
E05-15	14314-Z010110-0000	NUT, VALVE ADJUSTING	2	
E05-16	14312-Z010110-0000	NUT, VALVE LOCK	2	
E05-17	12105-Z080110-0000	RETAINER, VALVE SPRING	1	

**FIG.7 STARTER (E08)**



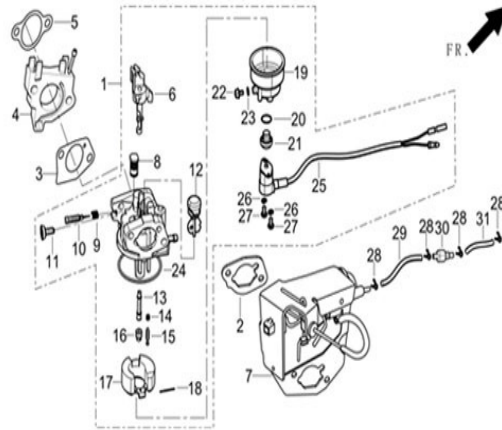
REF.NO.	PART NO	DESCRIPTION	Q'TY	UNIT PRICE
E08-11	90251-0608-01	WASHER ASSEMBLY,BOLT AND FLAT	3	
E08-12	28200-Z101210-H700	STARTER ASSY, RECOIL	1	

**FIG.8 SHROUD (E14)**



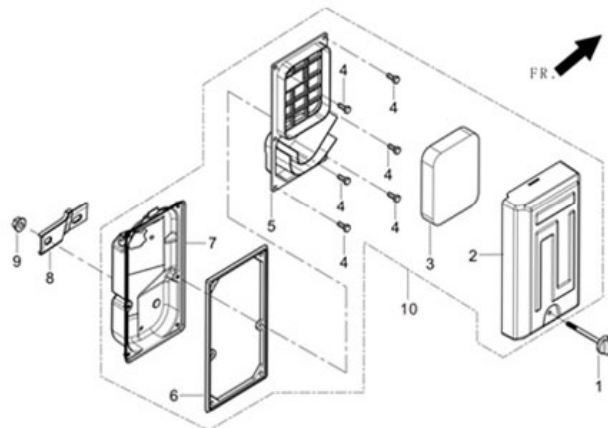
REF.NO.	PART NO	DESCRIPTION	Q'TY	UNIT PRICE
E14-1	28110-Z310110-Y100	SHROUD(YELLOW)	1	
E14-2	19304-Z100110-0000	SHROUD, CYLINDER BODY	1	
E14-3	90001-0612-01	BOLT	1	
E14-4	90001-0612-03	BOLT	5	

**FIG.9 CARBURETOR ASSY.(E11)**



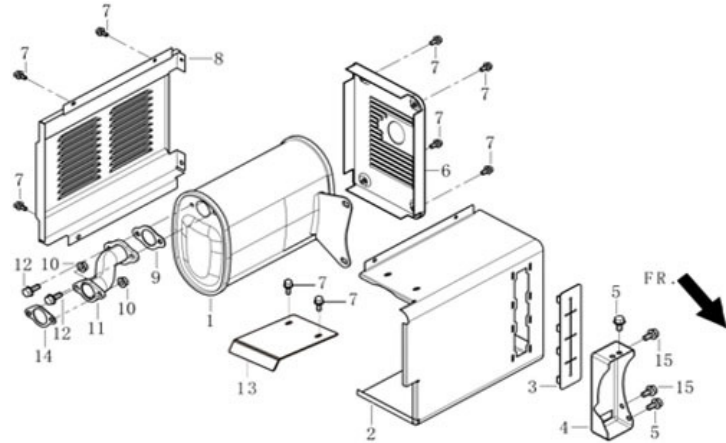
REF.NO.	PART NO	DESCRIPTION	Q'TY	UNIT PRICE
E11-1	16100-Z100510-0000	CARBURETOR ASSY.	1	
E11-2	17001-Z080110-0000	GASKET, AIR CLEANER	1	
E11-3	16001-Z100110-0000	GASKET, CARBURETOR	1	
E11-4	16003-Z100210-0000	PLATE, CARBURETOR INSULATOR	1	
E11-5	17002-Z100110-0000	GASKET, INLET	1	
E11-28	90740-Z010210-0000	COLLAR	4	
E11-30	15150-Z080110-0000	VALVE, DASHPOT CHECK (28-29-30-31)	1	

**FIG.10 AIR CLEANER (F02)**



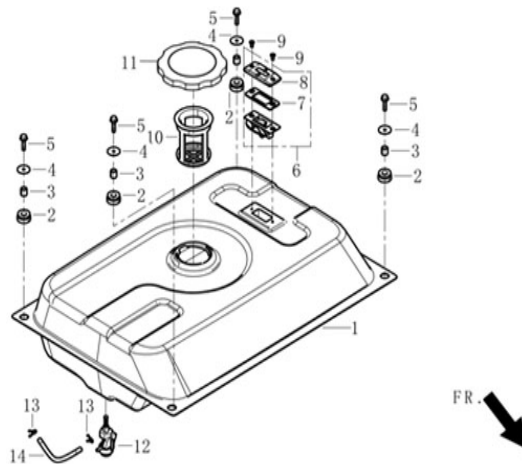
REF.NO.	PART NO	DESCRIPTION	Q'TY	UNIT PRICE
F02-3	17151-Z310210-0000	AIR CLEANER ELEMENT	1	
F02-8	17003-Y030110-0000	SUPPORT, ATR CLEANER	1	
F02-9	90305-0600-33	WASHER	1	
F02-10	17100-Z100210-0000	AIR,CLEANER	1	

**FIG.11 MUFFLER ASSY.(F04)**



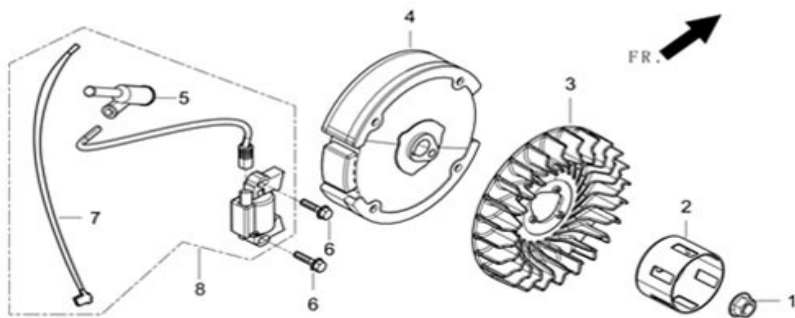
REF.NO.	PART NO	DESCRIPTION	Q'TY	UNIT PRICE
F04-1	18100-Y030110-0000	MUFFLER ASSY.	1	
F04-2	18003HY030110-H300	COVER, MUFFLER INNER(BLACK)	1	
F04-3	18005-Y030120-0000	CUSHION,MUFFLER	1	
F04-4	18030-Y030110-0000	BRACKE,MUFFLER MUFFLER	1	
F04-5	90001-0816-01	BOLT	2	
F04-6	18002-Y030110-H300	COVER, MUFFLER SIDE(BLACK)	1	
F04-7	90007-0612-A3	BOLT	9	
F04-8	18130-Y030110-H300	COVER, MUFFLER OUTER(BLACK)	1	
F04-9	18001-Z080110-0000	GASKET, EXHAUST OUTLET	2	
F04-10	90001-0830-03	NUT	2	
F04-11	18150-Z100210-0000	PIPE, EXHAUST	1	
F04-12	90001-0830-03	BOLT	2	
F04-13	18105-Y030110-H300	PLATE,INNER COVER GUIDE	1	
F04-15	90001-0816-03	BOLT	2	

**FIG.12 TANK, FUEL (F01)**



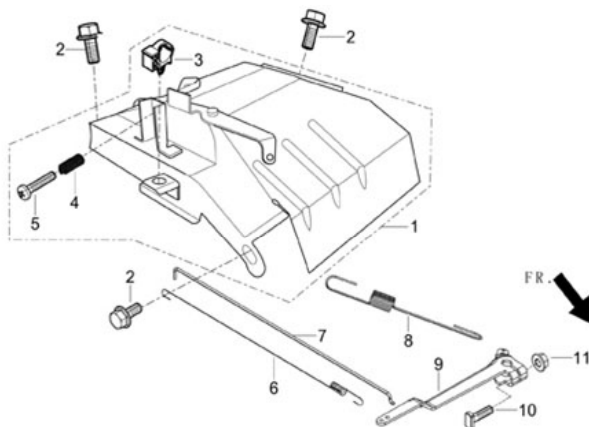
REF.NO.	PART NO	DESCRIPTION	Q'TY	UNIT PRICE
F01-1	16620-Y440110-H700	TANK, FUEL(BLACK)	1	
F01-2	16601-Y020120-0000	SLEEVE, FUEL TANK RUBBER	4	
F01-3	90683-Y020110-0000	BUSH	4	
F01-4	90408-Y020110-0000	WASHER	4	
F01-5	90007-0625-A3	BOLT(M6x25)	4	
F01-6	37200-Y020120-H600	LEVELER ASSY, OIL(BLACK)	1	
F01-9	90104-0512-53	SCREW	1	
F01-10	16652-Y020120-0000	STRAINER, FUEL	1	
F01-11	16730-Y020130-0300	COVER, FUEL TANK(BLACK)	1	
F01-12	16750-Y020110-0000	COCK ASSY, FUEL	1	
F01-13	90740-Z010210-0000	COLLAR	2	
F01-14	90686-Z080410-0000	TUBE, FUEL	1	

**FIG.13 FLYWHEEL SUBASSEMBLY (E15)**



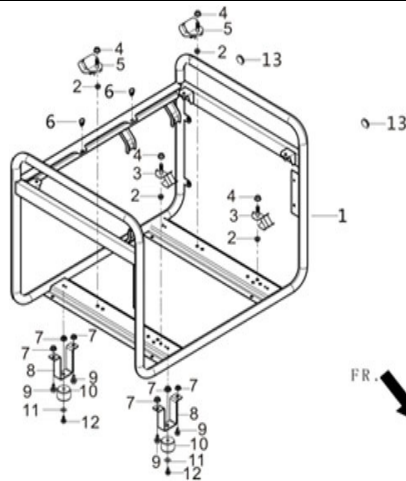
REF.NO.	PART NO	DESCRIPTION	Q'TY	UNIT PRICE
E15-1	13501-Z080110-0000	NUT, FLYWHEEL	1	
E15-2	28002-Z100120-0000	PULLEY, STARTER	1	
E15-3	19352-Z100110-0000	IMPELLER	1	
E15-4	13510-Z100110-0000	FLYWHEEL SUBASSEMBLY	1	
E15-8	30400-Z190210-0000	COIL, IGNITION	1	

**FIG.14 CONTORL ASSY.(E13)**



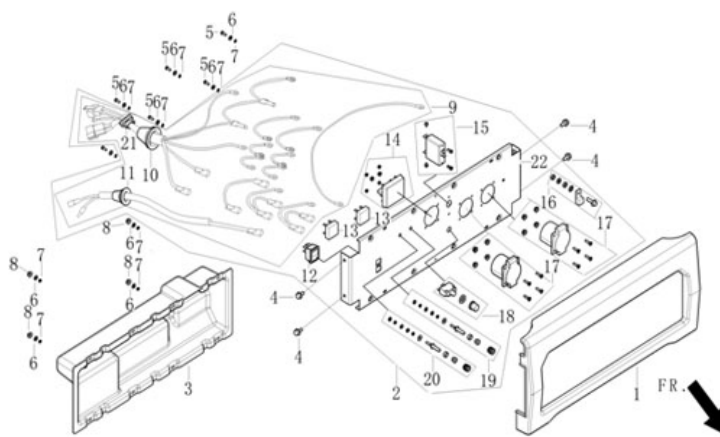
REF.NO.	PART NO	DESCRIPTION	Q'TY	UNIT PRICE
E13-1	16520-Z100220-0000	CONTROL ASSY, THROTTLE	1	
E13-2	90001-0612-01	BOLT	3	
E13-6	16012-Z080110-0000	SPRING, THROTTLE VALVE RETURNING	1	
E13-7	16062-Z100110-0000	ROD, GOVERNER	1	
E13-8	16063-Z100310-0000	SPRING, GOVERNOR	1	
E13-9	16070-Z100110-0000	SUPPORT SUBASSEMBLY, GOVERNOR	1	
E13-10	16072-Z010110-0000	BOLT, GOVERNOR SUPPORT	1	
E13-11	90305-0600-31	NUT	1	

**FIG.15 FRAME, ENGINE (F61)**



REF.NO.	PART NO	DESCRIPTION	Q'TY	UNIT PRICE
F61-1	51100-Y050310-QC00	FRAME ASSY, ENGINE(BLACK)	1	
F61-2	90305-0800-31	NUT	4	
F61-3	51005HY030120-0000	CUSHION, ENGINE FRAME	2	
F61-4	90306-1000-31	NUT	4	
F61-5	51012HY030120-0000	CUSHION, ENGINE FRAME REAR	2	
F61-6	16602-Y020130-0000	GASKET, FUEL TANK RUBBER	2	
F61-7	90007-0612-A3	NUT	6	
F61-8	51016-Y020210	SUPPORT, ENGINE FRAME SHOCK	2	
F61-9	90001-0816-03	BOLT	4	
F61-10	51014-Y030110-0000	SEAT, ENGINE FRAME SHOCK ABSORPTION	2	
F61-11	90408-1000-E1	WASHER	2	
F61-12	90001-0825-03	BOLT	2	
F61-13	90722-Y020110	PLUG, END	2	

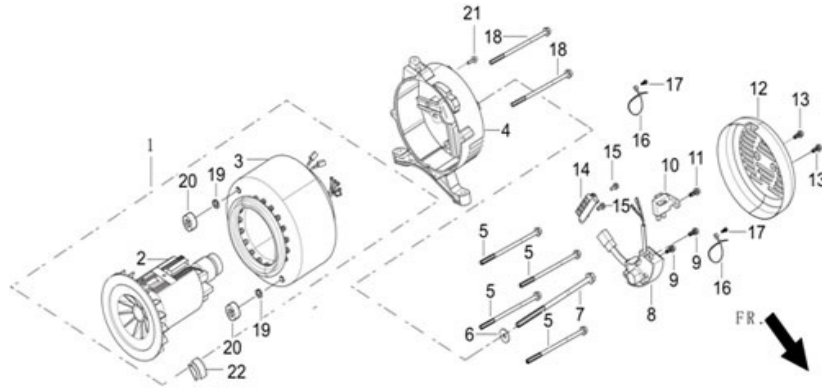
**FIG.16 PANEL SUBASSEMBLY, CONTROL (F62)**



REF.NO.	PART NO	DESCRIPTION	Q'TY	UNIT PRICE
F62-1	35680-Y500110-Q200	SEAT, PANEL(BLACK)	1	
F62-2	35610-Y050110-Y100	PANEL SUBASSEMBLY, CONTROL	1	
F62-3	35601-Y030120-Q200	CASE, PANEL REAR(BLACK)	1	
F62-4	90007-0612-A3	BOLT	4	
F62-5	90106-0410-51	SCREW	6	
F62-6	90408-0400-E1	WASHER	10	
F62-7	90403-0400-01	WASHER	10	
F62-8	90305-0400-71	NUT	4	
F62-12	35160-Y020110-0000	SWITCH SUBASSEMBLY	1	
F62-13	35621-Y020110-0000	BRIDGE, RECTIFICATION	2	
F62-14	37114-Y020110-0000	VOLTMETER	1	
F62-15	35645-Y030110-0000	BREAKER	1	
F62-17	35614-Y020110-0000	SOCKET SUBASSEMBLY, POWER SUPPLY	2	
F62-18	31234-Y020110-0000	PROTECTOR, OVERCURRENT	1	
F62-19	35634-Y020110-0000	TERMINAL, NEGATIVE ELECTRODE	1	
F62-20	35633-Y020110-0000	TERMINAL, POSITIVE ELECTRODE	1	

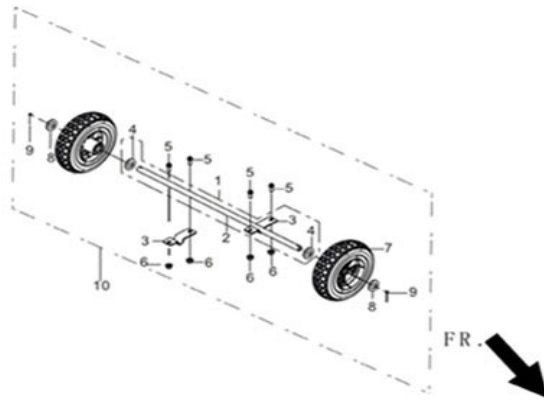


**FIG.17 ROTOR/STATOR (F63)**



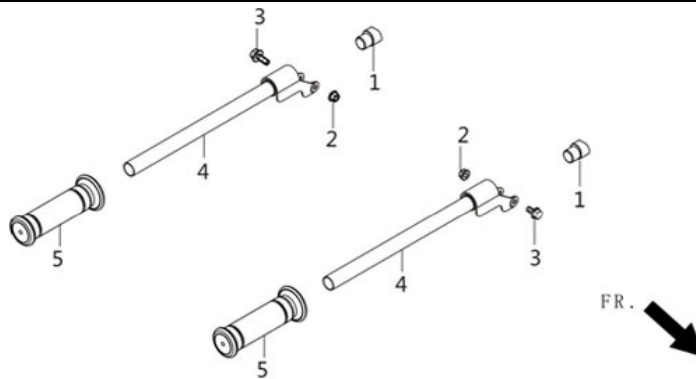
REF.NO.	PART NO	DESCRIPTION	Q'TY	UNIT PRICE
F63-1	31300-Y030410-0000	MOTOR ASSY	1	
F63-4	30021-Y030110-0000	BRACKET, MOTOR	1	
F63-5	30048-Y030120-0000	BOLT	4	
F63-6	90408-Y030110-0000	WASHER	1	
F63-7	30049-Y030120-0000	BOLT	1	
F63-8	30060-Y030120-0000	REGULATOR, VOLTAGE	1	
F63-9	90001-0516-01	BOLT	2	
F63-10	31320-Y030120-0000	BRUSH SUBASSEMBLY, CARBON	1	
F63-11	90001-0516-01	BOLT	1	
F63-12	30022-Y030110-Y100	COVER, MOTOR TAIL(YELLOW)	1	
F63-13	90001-0512-03	BOLT	2	
F63-14	31303HY020110-0000	BLOCK,TERMINAL	1	
F63-15	90001-0514-01	BOLT	2	
F63-16	90727-Y020110-0000	BAND	2	
F63-17	90001-0516-01	BOLT	2	
F63-18	31316-Y030130-0000	BOLT	2	
F63-19	90403-0500-03	WASHER	2	
F63-20	31317-Y030110-0000	NUT	2	
F63-21	90001-0512-01	BOLT	1	
F63-22	30023-Y030120-0000	STOPPER,MOTOR RIGHT COVER	1	

**FIG.19 WHEEL ASSY,FRONT (F17)**



REF.NO.	PART NO	DESCRIPTION	Q'TY	UNIT PRICE
F17-1	44020-Y030220-QC00	SHAFT, FRONT WHEEL	1	
F17-3	51126-Y020210-QC00	CLIP, WHEEL SHAFT FIXING LOWER	2	
F17-5	90001-0816-03	BOLT	4	
F17-6	90305-0800-33	NUT	4	
F17-7	44110-Y020210-0000	WHEEL BODY,FRONT	1	
F17-8	90408-1600-E1	WASHER	2	
F17-9	90501-0436-01	PIN	2	

**FIG.20 FRAME, ENGINE (F07)**



REF.NO.	PART NO	DESCRIPTION	Q'TY	UNIT PRICE
F07-1	54102-Y020110-0000	SEAT,HANDLE TUBE CONNECTING	2	
F07-2	90310-0800-33	NUT	2	
F07-3	90001-0840-03	BOLT	2	
F07-4	54110-Y030110-QC00	TUBE HANDLE	2	
F07-5	54101-Y020110-0000	SLEEVE,HANDLE RUBBER	2	